

Explore New England High Country: 5-Day Adventure Through Historic Towns | 07-11 Apr 2025

Embark on a tour through the New England High Country, where the borders of NSW and QLD intertwine. The historic town of Tenterfield will be a great base to also uncover fascinating surrounding towns such as Inverell, Glenn Innes, Texas, and Stanthorpe.



DAY 1 (LD): HOME TO TENTERFIELD

Monday 7 April 2025

Welcome to our 5-day New England and High Country tour. We set off this morning making our way to Warwick for lunch at the local RSL. After our lunch, we continue south to Stanthorpe where we head to Stanthorpe Cheeses. A variety of cheeses, at the peak of perfect, will be waiting for us. We then stop at Ballandean Estate, Queensland's oldest family-owned and operated winery.

The Puglisi family have made wine on this estate for over 80 years. Sit back and relax as we enjoy a wine tasting amongst the rustic wine barrels with views over the rolling hills. Now onto Tenterfield to settle into our accommodation for the next four nights.

Henry Parkes Motel, Tenterfield | 4 nights
(Lunch at Warick RSL Services and Citizens Memorial Club | Dinner at the motel)

DAY 2 (BLD): TENTERFIELD

Tuesday 8 April 2025

We spend the morning exploring the township of Tenterfield with our local tour guide aboard the coach. The town was first made famous by Sir Henry Parkes and his 1889 speech which set in motion the popular movement resulting in the Australian Federation. We also drive past the Tenterfield Saddler which was made famous by Peter Allen's tribute to his past and grandfather George Woolnough in the song 'Tenterfield Saddler'.

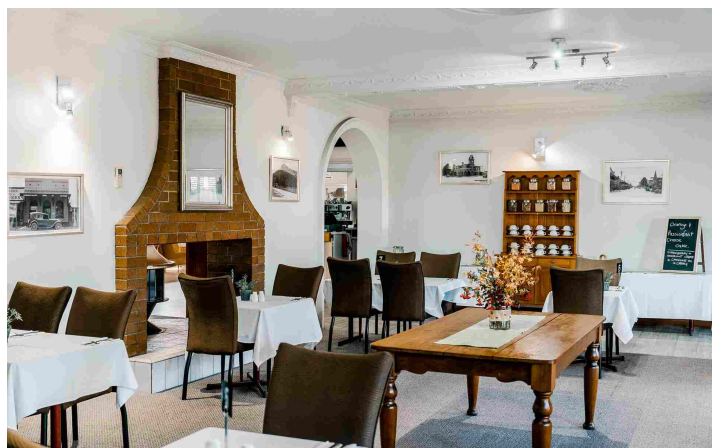
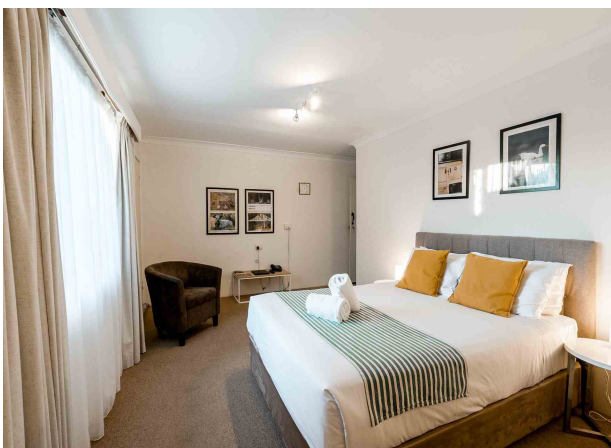
Next, we visit the award-winning Glenrock Gardens. The 10 acres of gardens are incorporated within a working farm, and although the gardens are very much designed in the English style with dry stone rock walls throughout, they are also surrounded by iconic Australian bushland.

We enjoy a guided tour of the stunning gardens and lunch here. Our final visit is to the Tenterfield Railway Station Museum. The station was opened in 1886 and is a rare survival of something that was once common throughout NSW. It is an almost intact nineteenth-century railway precinct. (Breakfast and dinner at motel | Lunch at Glenrock Gardens)

DAY 3 (BLD): INVERELL, & GLEN INNES

Wednesday 9 April 2025

Our journey today takes us to the towns of Inverell and Glen Innes. Our first visit is to the National Transport Museum in Inverell for a morning tea and a look through their collection. With over 120 vehicle exhibits, ranging from vintage, veteran, classic and motorcycles, the museum has become a valuable tourist attraction for the New England area.



Next, we visit the Pioneer Village, a unique village as all the buildings featured have been collected from Inverell and the surrounding districts. They represent the lifestyle and pioneering spirit of bygone days. This afternoon we arrive at charming Glen Innes where we will be greeted by a local expert to help us explore the town. Uncover the great cultural significance of the Australian Standing Stones, a tribute to the Celtic heritage of the early European settlers. Completing an insightful tour we return to Tenterfield.

(Breakfast and dinner at motel | Lunch at Pioneer Village)

DAY 4 (BLD): TEXAS

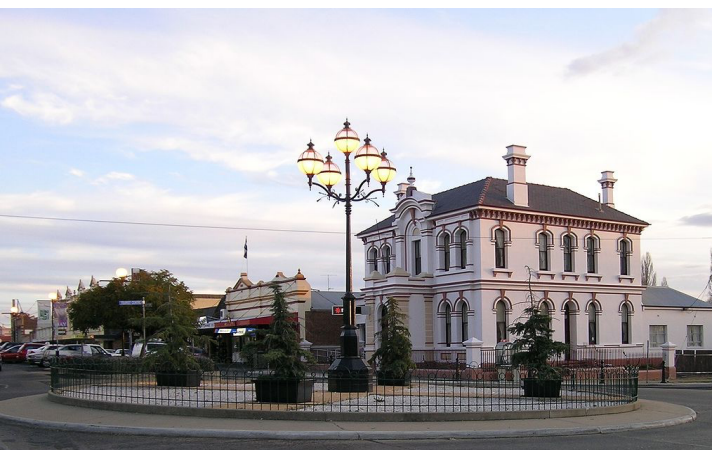
Thursday 10 April 2025

Today we travel to the town of Texas, situated on the Dumaresq River. Primarily a sheep and cattle grazing area, Texas boasts a variety of other industries – orchards, small crop farming, feedlots and a growing touring industry. We first head to Texas Rabbit Works for morning tea and a tour. This was a thriving industry when rabbits were in plague proportions throughout the district.

Like many communities in the southern parts of Australia, the Texas community survived the great depression by trapping and selling rabbits for export to America and England. We stop at the Stockman Hotel for lunch before we visit the Texas Heritage Centre and Tobacco Museum. The museum offers a fascinating insight into the history of the local area. It has numerous buildings to explore from a mini shearing shed, harness shed, jail and stocks, smithy, post office store, farm shed and mission hall.

There is also a school room with teacher aids from many decades ago. After an interesting day, we make our way back to Tenterfield for a last dinner together on tour.

(Breakfast and dinner at motel | Lunch at Stockman Hotel)



DAY 5 (BL): TENTERFIELD TO HOME

Friday 11 April 2025

We say goodbye to our hosts today as we begin our journey home. We travel to Bestbrook Mountain Resort for lunch and some time to wander the property. Explore the collection of old machinery and uncover the treasures from yesteryear hidden throughout the Coachhouse. From here we head back to the Sunshine Coast to complete a wonderful tour to the New England High Country. *(Breakfast at motel | Lunch Bestbrook Mountain Resort)*

Tour Inclusions

- Coach Transportation from the Sunshine Coast
- 4 nights motel accommodation
- 4 motel-cooked breakfasts
- 4 motel two-course dinners
- 5 included lunches – see below
- Lunch at Warwick RSL Services and Citizens Memorial Club
- Tastings at Stanthorpe Cheese
- Wine tasting at Ballandean Estate Wines
- Guided town tour of Tenterfield
- Tour and lunch at Glenrock Gardens
- Guided tour at Tenterfield Railway Station Museum
- Visit and morning tea at the National Transport Museum
- Visit and lunch at Pioneer Village
- Historical town tour of Glenn Innes
- Visit and morning tea at Texas Rabbit Works
- Lunch at Stockman Hotel
- Visit to Texas Heritage Centre & Tobacco Museum
- Visit and lunch at Bestbrook Mountain Resort

Costs

\$1,895.00 per person Twin/Twin Share / Double

\$2,195.00 per person Single

